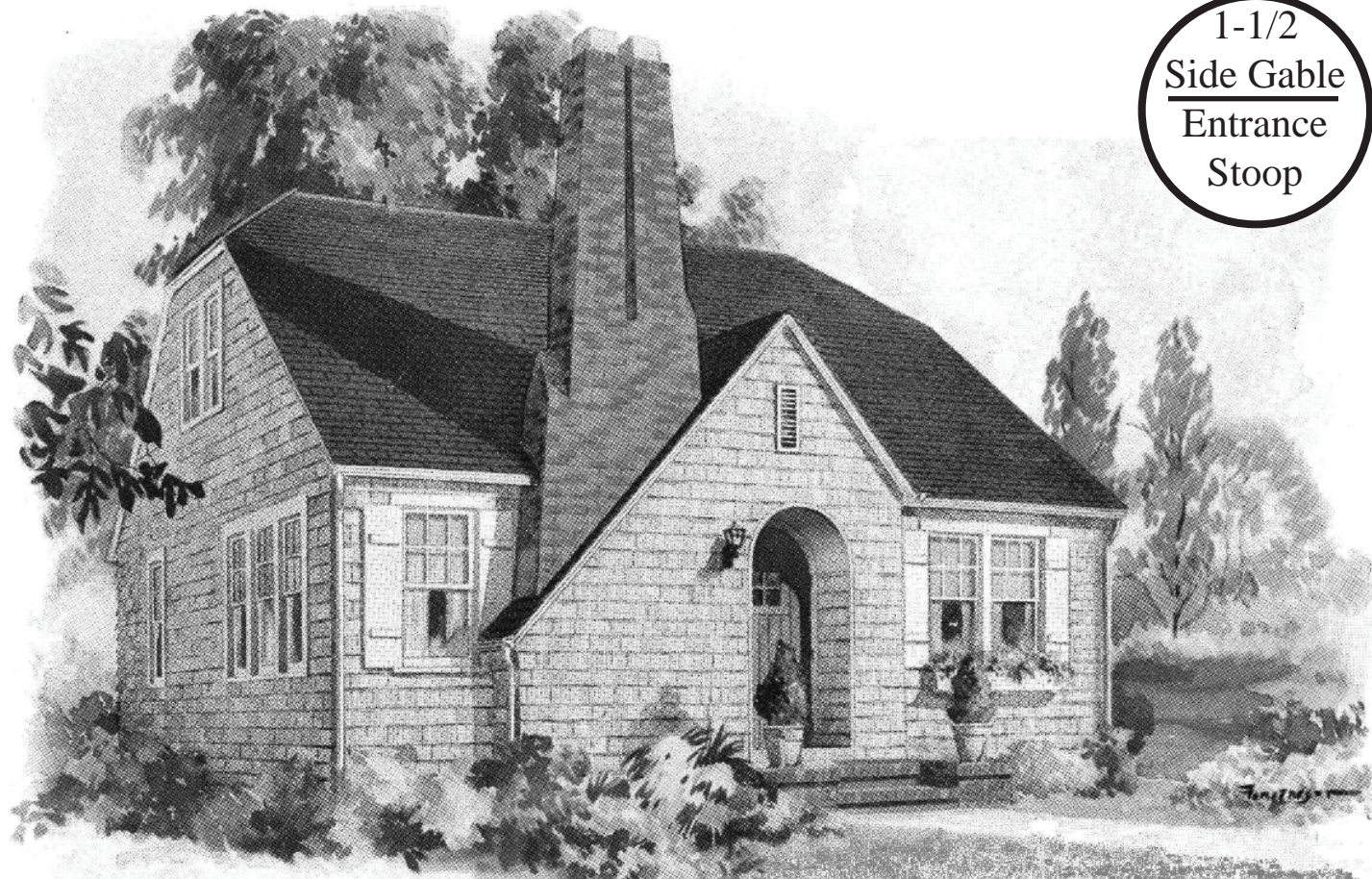


1-1/2  
Side Gable  
Entrance  
Stoop



**Kenwood (1929-1931 Ready-Cut)**

*Gordon-VanTine Design*

1929 (\$2087), 1930 (\$2087), 1931 (\$1998)

The Kenwood is similar to the Sears *Dover* and Aladdins *Lindbergh*, all being Neo-Tudor style homes with sloped entrance gables and accentuating chimneys. The Kenwood is easily identified by the one window aside the chimney, the paired windows on the opposite side and the recessed round-top entrance with thin attic vent above. The Kenwood has clipped gables but examples without clipped gables have been found, although they may actually be examples of Gordon-VanTine's *Burton*. Although the Kenwood was offered only a few years it was emmensely popular.

*"My wife and I had been thinking, planning - dreaming about a home all our own for years - ever since we were married, in fact, one of the first things I did was to buy a lot. But we never got right down to building the actual house until a few months ago when Ward's showed us how easy it is. And now we are so thrilled - so happy in our own home that we tell everybody about it."*

- 1929 Wardway Homes



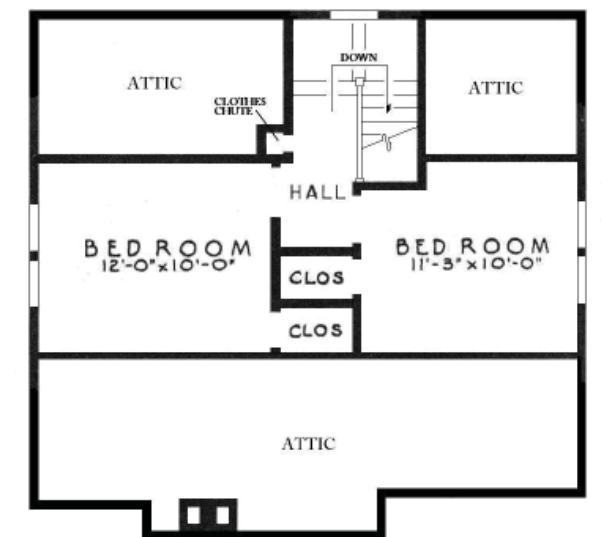
The Gordon-VanTine *Burton* from their 1932 catalog.



A perfect unaltered *Kenwood* In Aurora, Illinois (photograph by Rebecca Hunter).



1st Floor



2nd Floor